



FAMILY SERVICE SCOOP

Quarterly News from Family Service Association of Bucks County

SPRING
2015

www.fsabc.org



IN THIS ISSUE ►

Breaking Ground	1
Message from CEO	3
Help with Housing	4
Filling Treatment Gap	4
Ways We Can Help	5
8-Year-Old's Plea	5
Golf Outing	6

BREAKING GROUND IN APRIL

Thank you to everyone who participated in round two of Buck Up Bucks County! Thanks to your support, the Bucks County Emergency Homeless Shelter is getting its much needed bathroom renovations this spring.

The Campaign

Buck Up Bucks County, Round Two began on October 5, 2014 with a goal of raising \$200,000 to help the homeless in Bucks County. Once again, in partnership with the Bucks County Courier Times, The Intelligencer and Comcast, we asked Bucks County residents to donate a dollar to help the homeless, and Bucks residents came through. On December 15, 2015, a \$30,000 donation from Dr. Daniel Files and Bucks Family Medicine put the campaign over its goal.

Though the campaign is officially over, donations continue to trickle in, and the total now exceeds \$230,000. All

but \$60,000 of these funds is going directly to the Bucks County Emergency Homeless Shelter, a program of Family Service, for much-needed bathroom renovations. The first \$60,000 went to Advocates for Homeless & Those in Need to purchase a bus for transporting the homeless during Code Blue weather emergencies.

Need for an Overhaul

"Out of Order" signs are regularly affixed to the doors of the Bucks County Emergency Homeless Shelter's eleven bathrooms. Plumbing fixtures are in constant need of repair, and temporary fixes are keeping them (mostly) in working order until the renovations

BREAKING GROUND (CONTINUED)

are completed. With that said, we're pleased to announce that the renovations are scheduled to begin in April of this year.

Meet Our Team

Franco D'Andrea, Vice President, Eastern Region of The Huffman Group, volunteered in 2013 as Construction Manager for the shelter's kitchen renovation. He's back for this project, and The Huffman Group is generously donating a full time project manager for the entire renovation.

Stephen Worth, president and CEO of Worth & Company, a plumbing and heating services contractor based in Plumstead, offered to donate the bathroom plumbing fixtures including water closets, lavatory sinks, showers, bathtubs and pipes.

Stampfl Associates, an architectural and planning firm located in Doylestown, is the architect. They've supplied the floor plans, part of which are shown below.

Vast Improvements

With eleven small bathrooms for all 70 to 75 residents, morning and evening routines can be challenging. Currently, there are only two bathtubs, so families with small children often have to wait in line to use them.

Out of the eleven new bathrooms, four will have bathtubs and two will comply with ADA Standards for Accessible Design. Three of the bathrooms are designed specifically for families with young children. Built in benches strategically placed next to bathtubs will provide children with a place to wait while other family members get

ready. A baby changing station, separate from the bathrooms, will be a welcome new addition to the space.

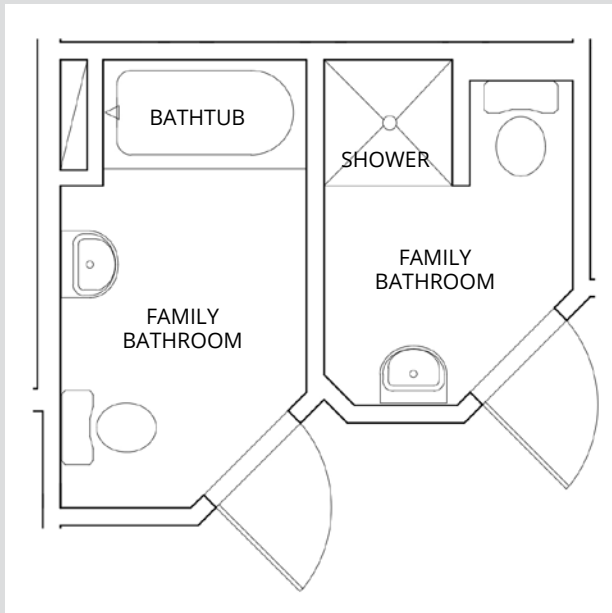
These much-needed renovations will greatly improve the living conditions for residents at the shelter; bath time and bedtime routines will be much easier for families once this project is complete.

Stay Tuned

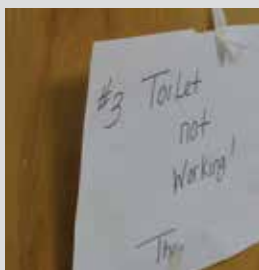
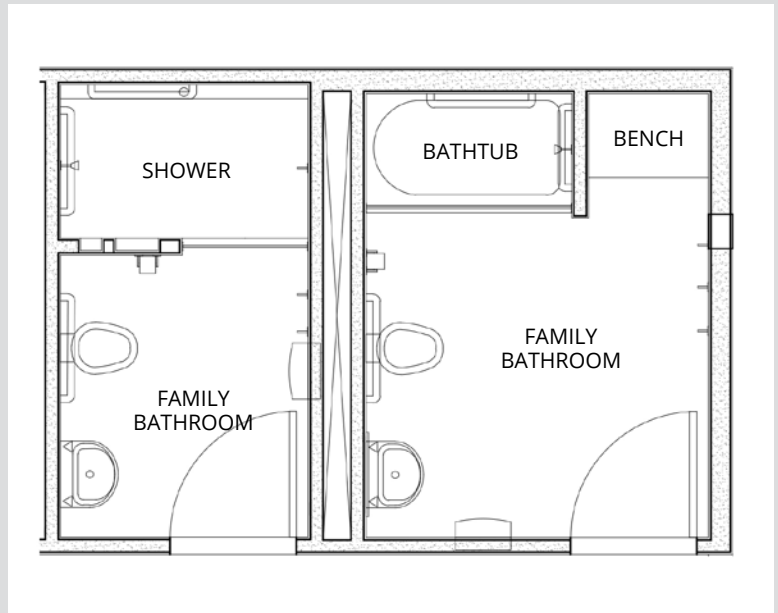
We'll be sure to keep you posted as this exciting project progresses. Thank you, again, for helping to make the shelter bathroom renovations a reality.

You can also visit us on Facebook at www.facebook.com/FamilyServiceBucks for regular updates including photos and videos once construction begins.

TWO EXISTING SHELTER BATHROOMS



TWO NEW SHELTER BATHROOMS



Top left: Floor plans of two existing family bathrooms; Top right: Floor plans for two brand new family bathrooms; Bottom: Details of existing bathroom conditions



© 2015 Kim Weimer | buckscountycouriertimes.com

Audrey J. Tucker, Chief Executive Officer of Family Service, speaks at a press conference held on Thursday, February 12, 2015 at the Langhorne train station

A MESSAGE FROM OUR CEO

Southeastern Pennsylvania Transportation Authority (SEPTA) is stepping up their suicide prevention efforts, first with National Suicide Prevention Lifeline signs at every station, and now by providing direct access from the Lifeline to the train dispatcher, should the need ever arise.

Lifeline Signs

On February 12, 2015, I joined SEPTA Officials, Bucks County Commissioners Robert G. Loughery, Charles H. Martin and Diane M. Ellis-Marseglia and other participants at the Langhorne train station to show support for the unveiling of new National Suicide Prevention Lifeline signs posted on the platform. The installation of the signs at the Langhorne station marks the completion of this initiative that began in September 2014; the Lifeline number is now posted at all SEPTA locations including rail, trolley and subway stations.

The transportation agency began discussing the signs in 2011 after seeing a rise in suicides on its rail system. "Approximately 50 percent of the fatalities on SEPTA's rail system

each year are ruled suicides," said Scott Sauer, SEPTA's Chief Officer of System Safety. "By placing the Lifeline signs at our stations, we believe that people who might think suicide is their only option will see that help is available 24 hours a day, seven days a week, 365 days a year."

Direct Line to Dispatcher

We've been working with SEPTA Officials to further prevention efforts. We now have the Transit Police Emergency telephone number posted at our Richboro call center where staff and trained volunteers answer CONTACT Helpline and National Suicide Prevention Lifeline calls. Never before have we had the ability to stop a train. Now, if we're on the phone with a caller who's on the tracks, we can go one step further to help that person.

Here in Bucks

According to Bucks County Coroner Dr. Joseph Campbell, there have been 15 suicides involving trains or other vehicles since 2010 in our county alone. If the Lifeline signs or access to SEPTA's dispatcher can help just one person, then the effort is worth it.

If you'd like to help prevent suicide in our community, consider becoming a volunteer listener for the CONTACT Helpline and the National Suicide Prevention Lifeline. We provide classroom and on-the-job training, and you won't answer calls on your own until you're comfortable doing so. For more information, visit www.fsabc.org/volunteer or contact Ellen Vinson, Director of Volunteer Services, at 215.757.6916, ext. 202 or volunteer@fsabc.org.

HELP WITH HOUSING

The Bucks County Housing Link is the centralized point of information, assessment and referrals for all Bucks County residents experiencing a housing crisis. Callers are given referrals to assessment centers, housing resources, Code Blue information and access to the Bucks County Emergency Homeless Shelter waiting list when applicable. Phone lines are answered by staff and volunteers at our Richboro call center.



You can help by responding to calls, gathering information and referring callers to the closest and most appropriate resource. Training is provided, and volunteers must be able to commit to one 2 to 4-hour daytime or evening shift each week.

To get involved, contact Ellen Vinson at 215.757.6916, ext. 202 or volunteer@fsabc.org.

FILLING A TREATMENT GAP

We're offering new trainings for mental health professionals: Integrated Treatment Series for Co-Occurring Disorders.

According to the Substance Abuse and Mental Health Services Administration (SAMHSA), 8.9 million adults have co-occurring disorders; that is they have both a mental and substance use disorder. Only about 7% of those individuals receive treatment for both conditions.

We're making a difference by providing a series of integrated treatment trainings for mental health professionals in our county. Trainings are held monthly, and topics include ethics and boundaries, engagement, assessment, working with families,

crisis prevention and more. Continuing Education Credits are available.

For a complete list of trainings, contact Gerri Parrish, Clinical Supervisor of Behavioral Health, at 215.757.6916, ext. 109 or gparrish@fsabc.org.

Family Service Association of Bucks County has pre-approved status by the Pennsylvania State Board of Social Workers, Marriage and Family Therapists and Professional Counselors for providing continue education courses.



YOU CAN HELP

Your gift will help children, teens, adults and seniors in need move toward a brighter, more stable future.

Visit www.fsabc.org/donate or use the enclosed envelope to make a tax-deductible gift.

For more information, please contact Ernie Nocito, Director of Development, at enocito@fsabc.org or 215.757.6916, ext. 208.

Please accept my donation of \$ _____

☐ Check payable to Family Service Association of Bucks County

☐ Credit Card (circle one) Visa MasterCard Amex

Name on card _____ Expiration _____

Card number _____ Security code _____

Signature _____ Date _____

Please return completed slip to:

Family Service Association of Bucks County
4 Cornerstone Drive, Langhorne, PA 19047



The official registration and financial information of Family Service Association of Bucks County may be obtained from the Pennsylvania Department of State by calling toll free, within Pennsylvania, 1.800.732.0999. Registration does not imply endorsement.

4 WAYS WE CAN HELP

Below are four eye-opening statistics regarding prominent issues in our community. Each quarter, we'll explore one of these issues and share how we're making a difference.

1 1 in 12 teens ages 13-18 has an anxiety disorder. Of those, only 18% receive mental health care.

2 9,770 children were removed from their homes and placed in foster care in Pennsylvania in 2013.

3 1 in 10 adults in the United States struggles with depression.

4 Nearly 500 people are homeless in Bucks County, and many more are on the verge of homelessness.



1. WE CONNECT TEENS WITH MENTAL HEALTH SERVICES

The Teen Center is a place where teens can talk confidentially about problems and get support from caring professionals and others who are going through similar struggles.

Every Friday from 3:00 PM to 9:00 PM, 30 to 40 teenagers come by to talk, socialize and take part in organized activities.

We regularly lead group discussions on topics that affect many teens including anger management, drug and alcohol use, peer pressure, relationships, depression and anxiety.

At-risk teens feel more comfortable coming to our drop-in center rather than to a traditional outpatient counseling facility. At the Teen Center, we identify problems, assess situations and make referrals to additional services when needed.

For more information, contact Gerri Parrish at gparrish@fsabc.org.

AN 8-YEAR-OLD'S PLEA

8-year-old Aaron Hammer of Fairless Hills was given an assignment in school to write a persuasive letter. The third grader took this opportunity to beg his parents for an experience that, in his words, would be the time of his life. When the letter made its way home among piles of homework and papers, Aaron's parents were astounded by their son's request.

"Mom and Dad...About the fresh lemonade stand, I have to do it. I've got a perfect plan. You can hold a tray of lemonade and we can go around the neighborhood. I can say: 'Would you like to help the homeless shelter by buying lemonade?' I really need to do it...I'll do anything to earn for it. I want to help the homeless badly. I will even stop fighting with my sister Kaylin. It will be the best time of my life."

Most kids Aaron's age were asking for tangible things, so his request really surprised his parents, Patti and Larry Hammer. "Where did this come from?" they wondered. Aaron had never before mentioned the homeless shelter or the assignment.

Given the frigid temperatures at the time, Aaron's parents didn't exactly agree to the lemonade stand, but they granted his wish to help the homeless. The Hammers asked friends and family members to donate to the Bucks County Emergency Homeless Shelter, promising fresh-baked cookies in return.

When Aaron stopped by the shelter to drop off his \$415 donation and 50 handmade scarves from his grandmother, he was beaming with pride – and so were his parents. Thank you, Aaron!



MAKING PEOPLE STRONGER SINCE 1953



GOLF OUTING ON JUNE 8TH

Join us for our 16th annual Drive for Youth Golf Outing at Jericho National Golf Club in New Hope, PA.

Over the past 15 years, the Drive for Youth Golf Outing has raised over \$610,000 for programs and services that directly benefit children and families in our community.

All golfers receive lunch, driving range access, refreshments during course play, green and cart fees, a golf gift and dinner at the awards

banquet. Raffles, contests and an auction will take place throughout the day. The event will be held rain or shine. Sponsorship and advertising opportunities are also available.

To register or to learn more, visit www.fsabc.org/golf or contact Ernie Nocito at 215.757.6916, ext. 208 or enocito@fsabc.org.

Founded in 1953, Family Service Association of Bucks County is a private nonprofit, non-sectarian, human service agency providing services to individuals and families. Family Service is accredited by the Council on Accreditation for Children and Family Services, Inc. and is licensed by the Commonwealth of Pennsylvania to provide outpatient mental health and drug and alcohol assessment and treatment services.

Family Service Association of Bucks County

4 Cornerstone Drive • Langhorne, PA 19047

215.757.6916

www.fsabc.org

The official registration and financial information of Family Service Association of Bucks County may be obtained from the Pennsylvania Department of State by calling toll free within Pennsylvania, 1.800.732.0999. Registration does not imply endorsement.

Board of Directors

Michael J. Mattie, President

Betsy N. Rendall, 1st Vice President

Francis J. Sullivan, Esq., 2nd Vice President

Brad Phillips, Secretary

William P. Larkin, Jr., CPA, Treasurer

Joseph C. Bondi, CMA; Mark S. Cappuccio, Esq.;

Ben Ciliberto; Alice Cahill Gens;

Fred P. Hesselthaler, CPCU;

Gary P. Lux, ChFC, CFP; Margaret M. Mohr;

Gwen Scott-Hodges; Michael E. Sneed;

Deborah Van Aken, PhD

Chief Executive Officer

Audrey J. Tucker, MSW, LSW