

Drive for Youth

Jericho National Golf Club
June 14, 2010

Presented by



Benefitting



2010 *Drive for Youth Golf Committee*

Co-Chairs

Francis J. Sullivan, Esq.--Hill Wallack LLP
Greg Hufner--Jericho National Golf Club

Committee Members

Michael J. Borski--The Flynn Company
Gerry Dugan--The Broker Network, Inc.
Joseph Feilmeier--Fulton Bank
James C. Fleming--Community Representative
Bonnie Halbreiner--MikeStone Bank
Paul Kawoczka--Span Packaging Services
Arthur Mayhew--Retired, Bucks County Courier Times
Brian Rodgers--Renaissance Bank Advisors
Jessica Sweeney--First Federal of Bucks County

Family Service Association 2010 Board of Directors

Francis J. Sullivan, Esq., President
Betsy N. Rendall, 1st Vice President
Karen Thompson, 2nd Vice President
Diane E. Reed, CEBS, Secretary
William P. Larkin, CPA, Treasurer

David E. Bass
Michael Conti
Sheila E. Dawe
Joseph Feilmeier
James C. Fleming
Gregory Hufner
Alina Denis Jarjour
James S. Krull
Christopher J. Leskauskas
Michael Mattie
Margaret M. Mohr
Gwen Scott-Hodges
Michael E. Sneed

Audrey J. Tucker, MSW, LSW, Chief Executive Officer

June 14, 2010

Dear Friends,

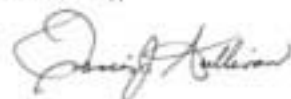
You have made a direct impact on a child's life...just by joining us today! Because of your participation, we have reached and surpassed a milestone, raising over \$400,000 since we began holding *Drive for Youth* eleven years ago.

You have helped 16-year-old Nicole who was struggling with the responsibilities of teen parenthood. With her father's encouragement, she entered our parenting education program where she learned about healthy child development and child safety. And since, quite understandably, Nicole was having difficulty balancing the responsibilities of being a parent with her desire to be a teenager, she was referred to a teenage parent support group so that she could meet others in her situation. Nicole is becoming a good mom; both she and her family members are proud of her progress!

You have helped the Davis children who were struggling with the accidental death of their mother. Their grades were suffering, and they had withdrawn from friends and activities. The two oldest, Matthew and Michelle, began attending the FSA's Teen Center where they participated in groups and occasionally met with a Counselor. Their younger sister, Jennifer, attended an Art Therapy Group at Family Service. The groups gave the Davis children the opportunity to work through their feelings of grief and loss, and provided them with added support. By the beginning of the next school year, all three were doing well academically and had become re-involved with their friends and activities.

Many youth are struggling with increased stress within their homes as their parents face job losses, financial difficulties and other problems. Thanks to you, Family Service is here to help them.

Sincerely,



Francis J. Sullivan, Esq.
Co-chair, 2010 *Drive for Youth*



Gregory Hufner
Co-chair, 2010 *Drive for Youth*

2010 SPONSORS

Special thanks to our sponsors

PARTNER

Renaissance Benefit Advisors

ACE

Gilbreth Packaging
Jones Apparel Group, Inc.
Magellan Behavioral Health
Wheelabrator Falls, Inc.

EAGLE

First Federal of Bucks County
Fulton Bank
National Penn Bank

GOLF CART

ConvaTec

PAR

Kampi Components Company, Inc.

DINNER

Bucks County Technology Park

LUNCHEON

Gilbreth Packaging

2010 SPONSORS

REFRESHMENT CART

The Broker Network, Inc.
Matrix Development Group

HOLE IN ONE

Keenan Motors

YOUNG CHAMPION AWARD

Newtown Exchange Club

TEE/GREEN SPONSORS

Agile Technologies
Bucks County Bank
Everything Plastic
Harris Fuels, Inc
Hill Wallack LLP
Robert W. Mallon Auto Paints
McCaffrey's Market
MileStone Bank
Nottingham Insurance
Peddler's Village, Inc.
ReMax Advantage
State Senator Robert Tomlinson
Span Packaging Services
Tamora Construction Company
TD Bank
The Flynn Company
Univest
WBCB 1490

FOURSOME HOSTS

Bucks County Technology Park
Michael Mattic/Doylestown Wealth Management, Inc.
Tony Flor
Hill Wallack LLP
Greg Mallison /Doylestown Wealth Management, Inc.
Lopez, Teodosio & Larkin
Span Packaging Services
TD Bank
The Ziff Company

DONORS

ABB Power Technologies USA
Artisan Gallery
Athletic Shoe Shop
Bucks County Courier Times
Cornerstone Club
Everything Plastic
First Federal of Bucks County
Joseph A. Fluchr III Funeral Home, Inc.
Gail West
Glass Masters
Headstrong Salon Ltd.
Kelch House
Jericho National Golf Club
Jim & JoAnna McDonald
Newtown Athletic Club
Northtec, Inc.
Sesame Place
Spikes Trophies, Ltd.
The Glamorous Life
The Rose Group/Applebee's
The Summer Kitchen
Waste Gas Fabricating Co., Inc.
WXTU 92.5 FM

HARRY DONAHUE

Harry Donahue is one of Philadelphia's most recognizable voices. Since 1979 he has been a morning news and sports anchor for KYW Newsradio 1060.

He is the voice of Temple University football and basketball, and hosts weekly radio and TV shows with Owls' football coach Al Golden and basketball coach Fran Dunphy.

Donahue has also done play-by-play for Philadelphia Eagles pre-season games and college basketball for the Atlantic Ten Conference "Game of the Week."

Every Sunday, NFL fans around the country hear Harry describe NFL Films' highlights that are displayed on stadium scoreboards.

Donahue has also been tapped for the big screen, portraying the voice of the play-by-play announcer in the 2006 Disney movie *Invincible* – the true story of Vince Papale, who, as a 30-year-old, fulfilled his dream of playing with the Eagles.

Donahue's sports reporting has won him two Pennsylvania Associated Press Awards for his coverage of the Philadelphia Phillies' playoff and World Series victories in 1980.

In May 2000, Donahue was inducted into the Pennsylvania Sports Hall of Fame.





The Exchange Club of Newtown

Community Service-Youth-Americanism

Exchange Clubs nationwide take part in the child abuse prevention program of our national foundation.

Newtown Exchange Club supports the efforts of
Family Service Association
in their development and recognition
of youth in our communities.

YOUNG CHAMPION

Brittany Bodnar

Brittany is a 2010 graduate of Villa Joseph Marie High School. For the past three years Brittany has volunteered as a Junior Counselor at Camp Expressions, a camp for autistic children. She leads CYO student retreats in her parish, helping to plan activities and discussion groups, while setting a positive example for the students. Brittany also served as a peer counselor for three years at Villa Joseph Marie, guiding fellow students when needed.

This Fall, Brittany will attend St. Joseph's University where she intends to major in Biology.

For her true concern for, and commitment to, children and youth in her community, Brittany is the 2010 Young Champion.



**Here for our customers.
Here for our community.**

At National Penn, we care about our customers and the communities in which they live. Everyday we strive to make our towns a better place to do business and raise a family. We look beyond the everyday transactions to help you get one step closer to your dreams.

National Penn is proud to sponsor the Family Service Association's "Drive for Youth".



1.800.822.3321
www.nationalpenn.com

Member FDIC



**Proud to support the
Family Service Association
Golf Outing.**

Fulton Bank

LISTENING IS JUST THE BEGINNING.™

1.800.FULTON.4 | fultonbank.com

Fulton Bank, N.A. Member FDIC. Member of the Fulton Financial Family.





First Class Service... On a First Name Basis

Fast. Convenient. Responsive.

We're redefining business banking with some welcome terms.

Call today and learn how a change to MileStone will provide better banking service, solutions and support for your business- including Remote Control Banking...a "branch" on your desktop to provide 24/7 banking with check depositing capabilities.



Ph (866) 672.2655 | Fax (267) 880.0139 | www.milestonebank.com

© 2009 MileStone Bank. Member FDIC Insured.



Kampi Components Co., Inc. Serving Government and O.E.M.

DLA SUPPLY CHAIN ALLIANCE PARTNER -
CAGE CODE 72016

One of the largest "FULL LINE" suppliers of genuine
factory replacement spare parts to the
United States Military

Authorized distributor or dealer for hundreds of
OEM's and manufacturers

Complete in-house military packaging capabilities



Tel: (215) 736-2000

Fax: (215) 736-9000

88 Canal Road

Fairless Hills, PA 19030

Email: dodsales@kampi.com

Website: www.kampi.com

VINCENT J. MANNINO, D.M.D., P.C.

Preventive and Esthetic Dentistry

Floral Vale Professional Park
601-602 Floral Vale Blvd.
Yardley, PA 19067
(215) 968-6879

We Commend the Efforts of
**Family Service
Association**
to Strengthen Our Community

#1 Brokerage in Delaware Valley
with Top Agents to Serve your Needs

Newtown Office
215-860-9300



Prudential

See & Search
REALTY

© 2009 Prudential Real Estate Services, Inc. All rights reserved.



Family Service Association



**and sponsor this year's
Drive for Youth**



Wheelabrator Falls Inc.

A Waste Management Company



help²giveback

WE'RE PROUD TO SALUTE FAMILY SERVICE ASSOCIATION

Now, more than ever, it's important to support the causes you care about. Thank you for your dedication.



Jon Rosenwald, CFP®
Vice President, Financial Advisor
(215) 340-3393
Merrill Lynch
600 Hyde Park
Doylestown, PA 18902

 **Merrill Lynch**
Wealth Management
Bank of America Corporation

Merrill Lynch Wealth Management makes available products and services offered by Merrill Lynch, Pierce, Fenner & Smith Incorporated (MLPF&S) and other subsidiaries of Bank of America Corporation. Investment products:

Are Not FDIC Insured

Are Not Bank Guaranteed

May Lose Value

MLPF&S is a registered broker-dealer, member Securities Investor Protection Corporation (SIPC) and a wholly owned subsidiary of Bank of America Corporation. © 2010 Bank of America Corporation. All rights reserved.



FIRST FEDERAL OF BUCKS COUNTY

Doing more for you.

*is proud to support the
11th Annual Drive for Youth*

Since 1885, First Federal of Bucks County has been helping the local community grow and prosper, by providing loans, banking services, charitable contributions & volunteers.

www.firstfedbucks.com

215-788-3344



GILBRETH

3001 State Road
Croyden, PA 19021
www.gilbrethusa.com

**Best Wishes to
Family Service Association – Bucks Co.
from Your Friends at Gilbreth**

With Our Best Wishes

Johnson & Johnson
Vision Care, Inc.

Magellan is proud to support Family Service Association of Bucks County and the 11th Annual “Drive for Youth” Golf Outing

At Magellan, we believe that every individual and family has the ability to learn and grow.

We support a philosophy of wellness that focuses on discovering personal strengths, building hope and offering choices. We are committed to providing quality behavioral care to help individuals achieve their goals.

Newtown Care Management Center—*Serving HealthChoices Members in Bucks, Delaware, and Montgomery Counties*

Lehigh Valley Care Management Center—*Serving HealthChoices Members in Lehigh and Northampton Counties*

For more information:
visit www.MagellanofPa.com or call our
Newtown PA Care Management Center at **877-769-9779**

We look forward to hearing from you!





JONES APPAREL GROUP

is proud to support the
Family Service Association
11th Annual Drive for Youth Golf Outing

OUTFOX RETIREMENT WORRIES.



Will your high net worth be high enough when you retire? What are the best ways to grow it, protect it, pass it on?

We're Capital Planning Advisory Group. And we're a different breed of wealth manager. In our 25-plus years of experience, we have helped clients successfully plan for and navigate all kinds of retirement challenges.

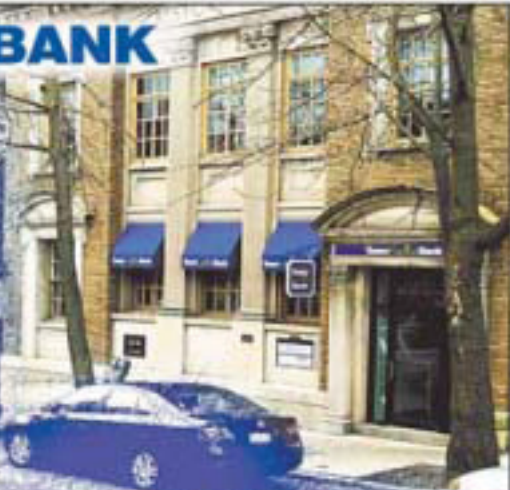
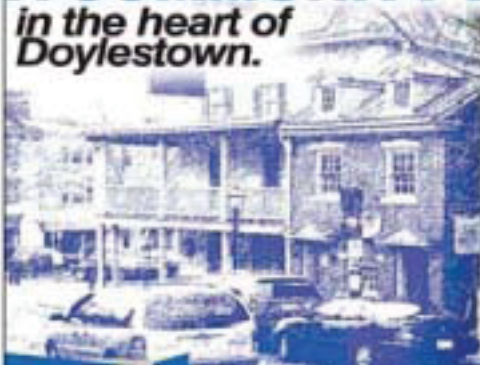
We stay away from the herd by doing our own research and analyses, so we're able to avoid group think and spot trends early.

And we're fee-only, so there's never a conflict of interest.

Call 215-579-5760 for more information. Or visit us at www.cpaginc.com.



A COMMUNITY BANK in the heart of Doylestown.



TeamCapitalBank
Different. Better.

210 PENNS TRAIL
NEWTOWN, PA
215-497-7447

18 N. MAIN ST.
DOYLESTOWN, PA
267-327-4505

Member
FDIC

www.teamcapitalbank.com



Drive for Youth Supports FSA's Child & Adolescent Programs



Family Service Association recognizes the impact behavioral health problems have on children as well as their families. Our programs provide children with a safe, supportive and therapeutic environment designed to address individual and family needs.

Your support allows FSA to help children and their families cope, manage or overcome such issues as:

- Parent/Child Conflict
- Academic Failure
- Behavior Problems
- Mental Illness
- Self-harmful Behaviors
- Loss
- Depression
- Attention Deficit Hyperactivity Disorder
- Substance Abuse
- Suicide Behavior

Our programs are flexible and designed to meet the specific needs of each child. In our programs:

- Children and their families learn and practice a variety of skills in exploring and understanding emotions, feelings or choices.
- The needs of each family are addressed through information, education, counseling and referrals to other services.
- Family members assume responsibility for their personal choices.

For more information on specific programs helping to strengthen the lives of youth in Bucks County, visit www.fsabc.org.



EXECUTIVE BENEFITS - CORPORATE INSURANCE - SPECIALIZED FINANCING STRATEGIES

**Renaissance
supports**

**FAMILY
SERVICE
ASSOCIATION**

Drive For Youth



2500 YORK ROAD
SUITE 210
JAMISON, PA 18929
267-482-6410
WWW.RBA-NFP.COM

Securities and Investment Advisory Services offered through NFP Securities, Inc., a Broker/Dealer, Member FINRA/SIPC, a Federally Registered Investment Advisor. Renaissance Benefit Advisors is an affiliate of NFP Securities, Inc. and a subsidiary of National Financial Partners Corp., the parent company of NFP Securities, Inc.